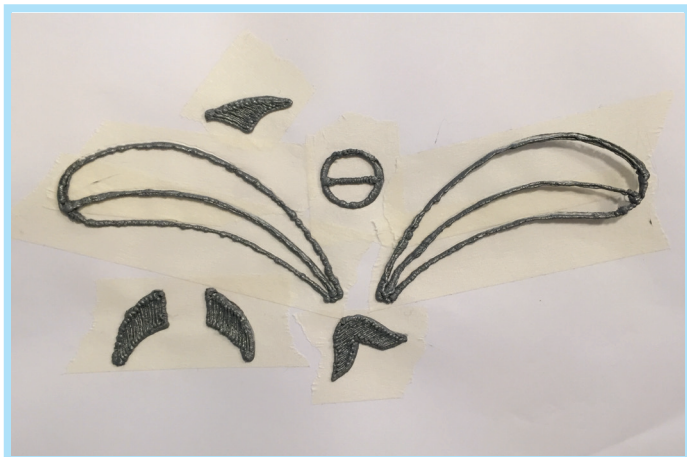


Final



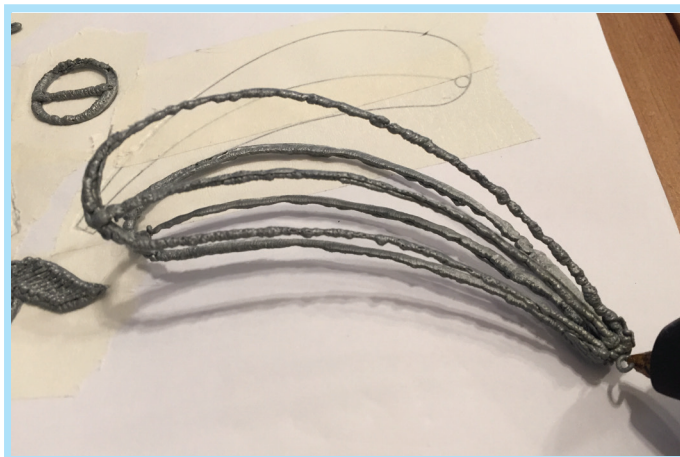
Using this stencil you can create your very own Dolphin with our Cool Coral ABS mixed pack. Fill in all the pieces and then put them together piece by piece.

Step 1



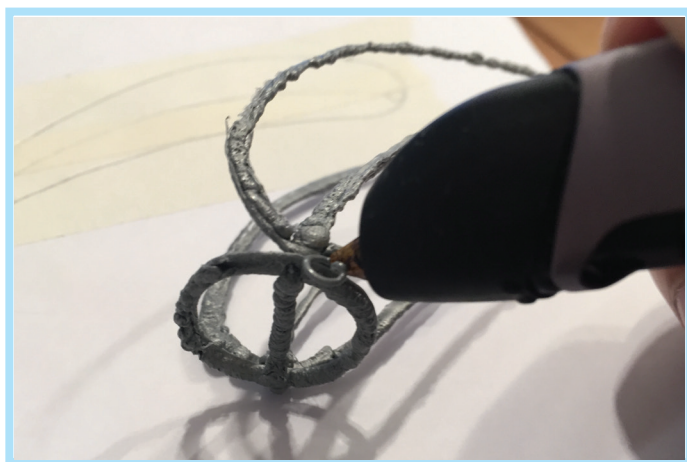
Print out the stencil and trace the pieces.
*Note there are only certain parts that needs to be filled in.

Step 2



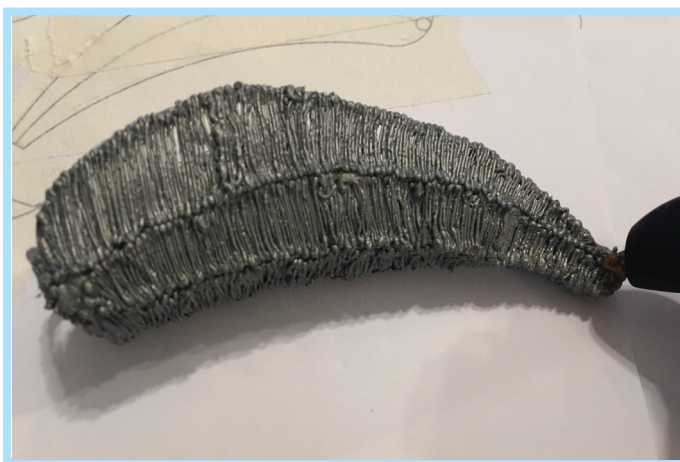
Attach only the bottom part of "Body 1" and "Body 2" together.

Step 3



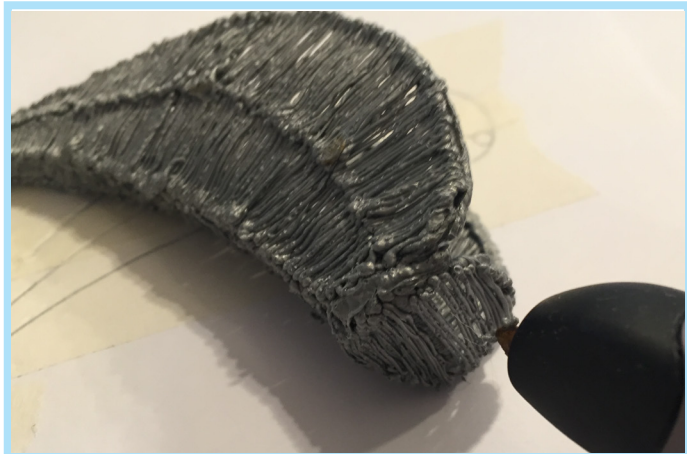
Fill up the head by free hand doodling on it.

Step 4



Fill up the whole body by free hand doodling on it.

Step 5



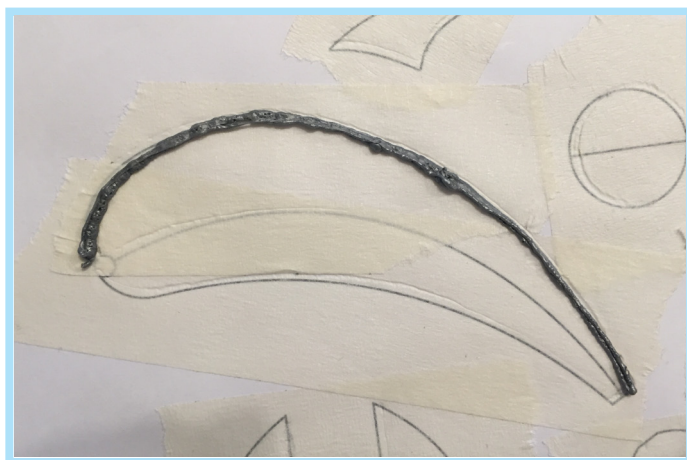
Fill up the whole circle.

Step 6



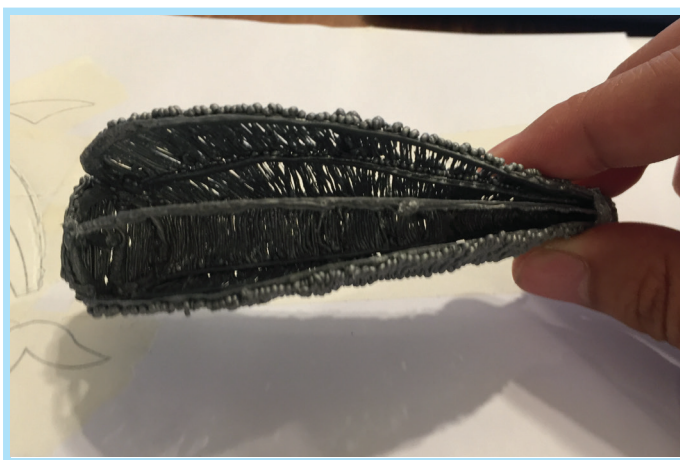
Thicken the upper part of the circle creating a bump on the dolphins forehead.

Step 7



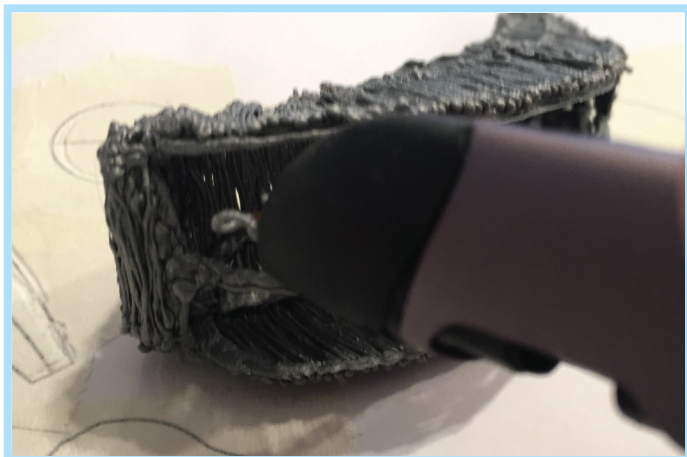
Trace another line on "Body 1".

Step 8



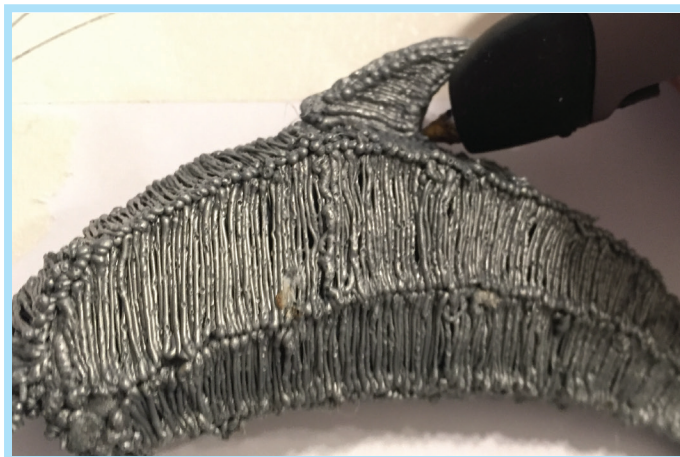
Then attach it in the middle.

Step 9



Fill up the upper part of the body by free hand doodling on top of it.

Step 10



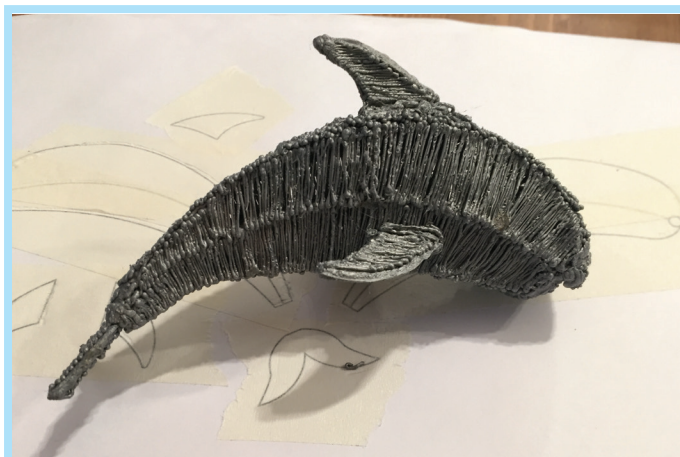
Attach the "Dorsal Fin" on the upper part of the body.

Step 11



Thicken the pectoral fins on the opposite side.

Step 12



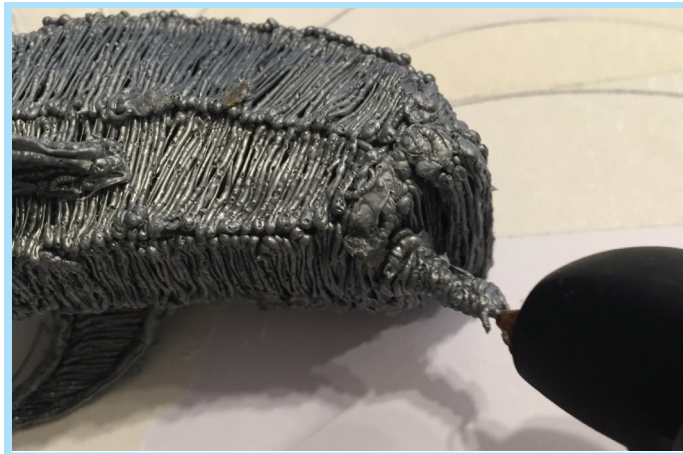
Attach the "Tail" and "Pectoral fins" together. Remember to thicken the opposite side of the tail.

Step 13



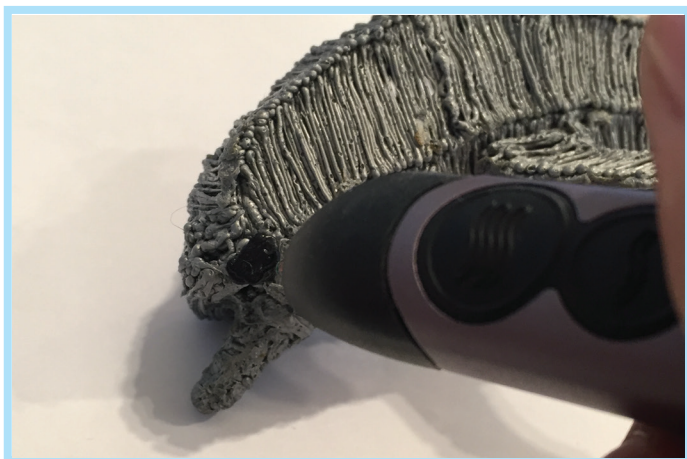
Free hand doodle the beak of the dolphin.

Step 14



Attach the beak, the beak should be at least 1.5 cm tall.

Done!



Finally, add the eyes and you are done!

