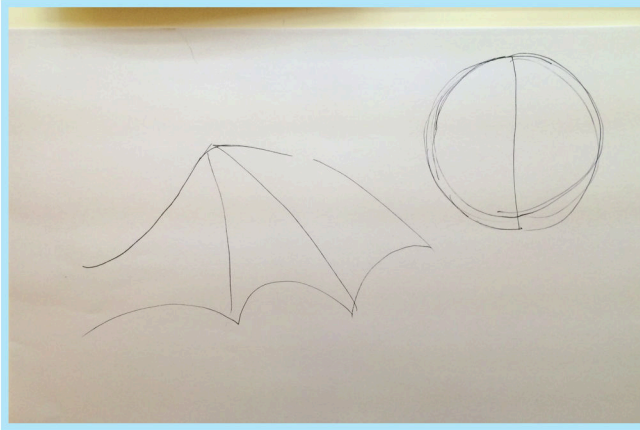


## Step 1



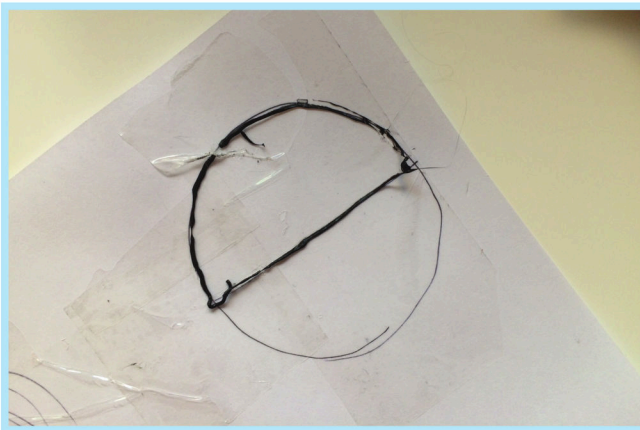
Draw a template for the bat's wing and body

## Step 2



Follow the template shape, draw two wings and fill in the gaps

## Step 3



Outline two separate semi-circles

## Step 4



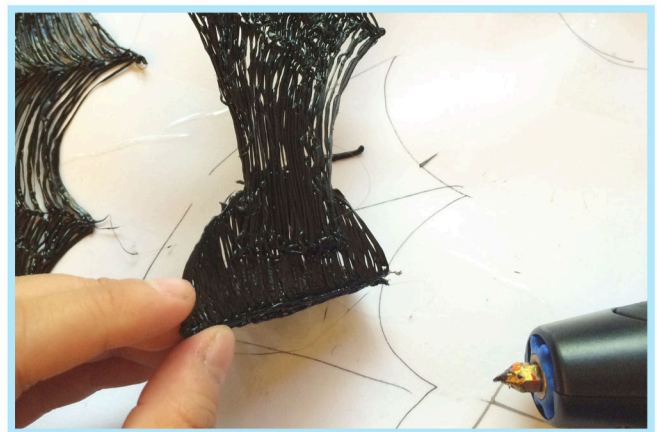
Fill it in!

## Step 5



Attach the two semi-circles together in a "V" shape so it looks like a potato chip. This will serve as the body.

## Step 6



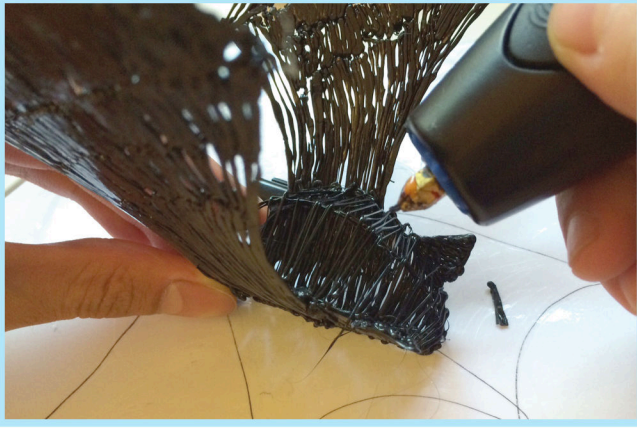
Attach the wings to the sides of the body

# Halloween Bat Figure

By 3Doodler Community

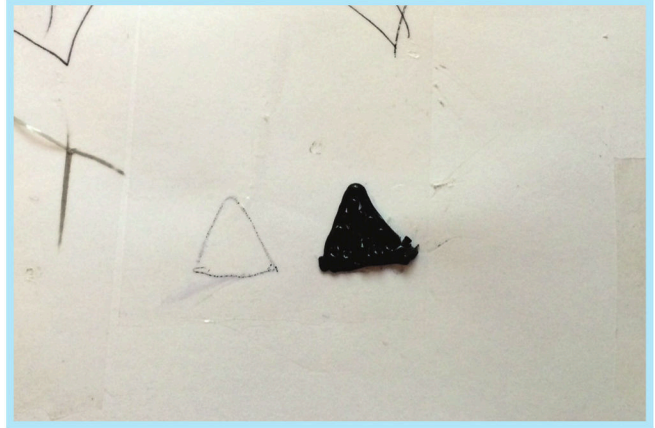


## Step 7



Give the bat a spine and fill in the body to give your figure volume.

## Step 8



Add details like ears and eyes.

## Final



# Halloween Bat Figure

By 3Doodler Community

